

# BECOME

#1

**OUR STORY of  
COMMUNITY  
ENGAGEMENT and  
SOCIAL CHANGE**

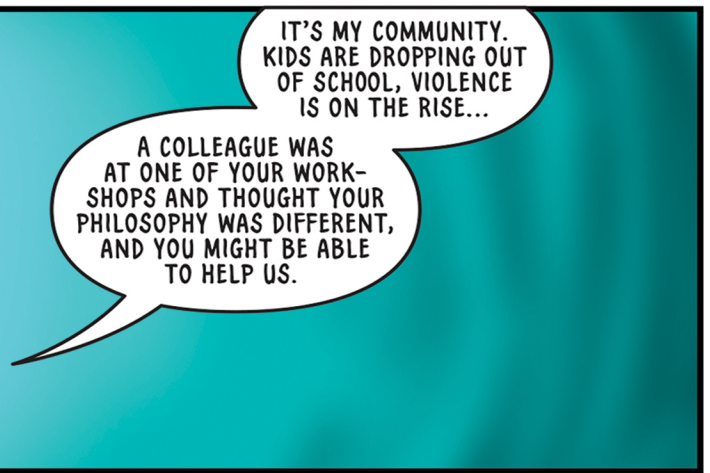


**LODGE • CAMACHO • McBRIDE • MACINNES**

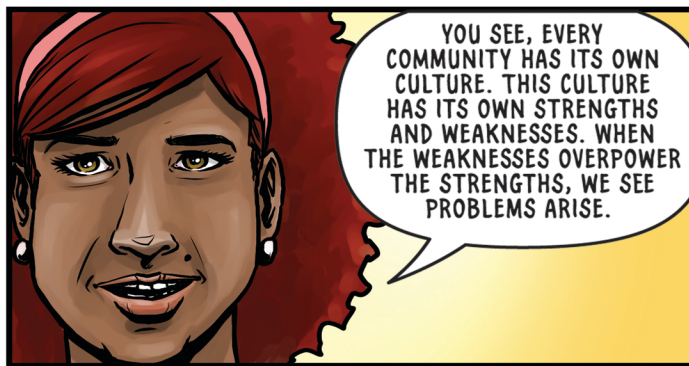












"WHEN A COMMUNITY IS DISENFRANCHISED, YOU OFTEN SEE TEARS IN THE STRENGTHS OF A CULTURE."

"REJUVENATING THESE CULTURAL STRENGTHS IS PART OF THE CURE."

"AT *BECOME*, WE BELIEVE TRUE HEALING AND REBUILDING THE COMMUNITY STARTS FROM WITHIN."



"A COMMUNITY THRIVES WHEN IT WORKS TOWARD A COMMON GOAL."



"OUR MISSION IS TO HELP DEFINE THAT AND PARTNER WITH THEM TO TURN THEIR IDEAS INTO ACTION AND THEIR TALENT INTO SUCCESS."

"WE WORK WITH VOLUNTEERS IN THE COMMUNITY WHO ARE LOOKING TO IMPROVE THE ENVIRONMENT THEY LIVE IN."



"A DIRECTOR AND STAFF ARE RECRUITED FROM THE COMMUNITY TO LEAD THE WORK IN THE COMMUNITY."

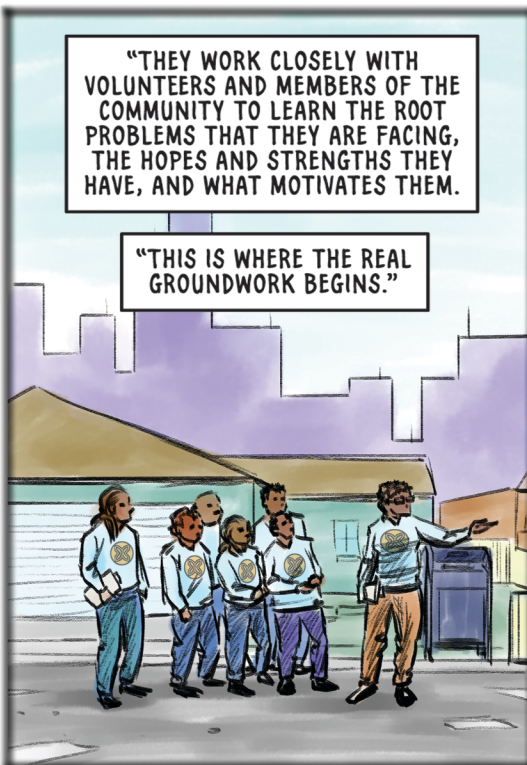


"TOGETHER, WE BEGIN DOING THE WORK OF THE C.E.I."



"THEY WORK CLOSELY WITH VOLUNTEERS AND MEMBERS OF THE COMMUNITY TO LEARN THE ROOT PROBLEMS THAT THEY ARE FACING, THE HOPES AND STRENGTHS THEY HAVE, AND WHAT MOTIVATES THEM."

"THIS IS WHERE THE REAL GROUNDWORK BEGINS."





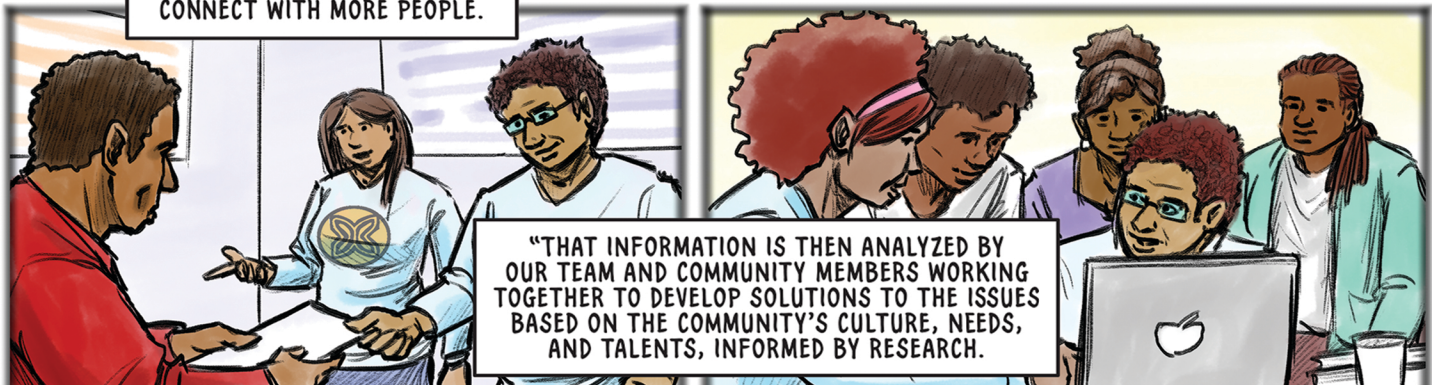


"THE DIRECTOR AND STAFF  
WILL CONDUCT INTERVIEWS  
COMMUNITY-WIDE."



"FOCUS GROUPS  
ARE HELD WITHIN  
THE COMMUNITY."

"THE DIRECTOR AND STAFF  
ALSO TRAIN THE VOLUNTEERS  
TO INTERVIEW, SO THEY CAN  
CONNECT WITH MORE PEOPLE."



"THAT INFORMATION IS THEN ANALYZED BY  
OUR TEAM AND COMMUNITY MEMBERS WORKING  
TOGETHER TO DEVELOP SOLUTIONS TO THE ISSUES  
BASED ON THE COMMUNITY'S CULTURE, NEEDS,  
AND TALENTS, INFORMED BY RESEARCH."



"REAL SOLUTIONS."

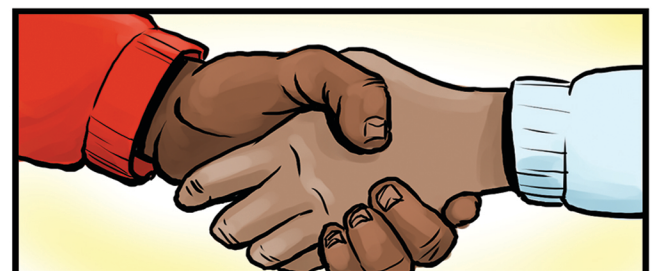
"THEN, WE WORK ON  
PUTTING THOSE SOLUTIONS INTO  
ACTION WITH THE COMMUNITY."

"HOW DOES THAT  
SOUND TO YOU, REY?"



GREAT. I'M  
GLAD YOU CAN  
HELP US.

SANDRA,  
MIGUEL, I'D LIKE  
TO INVITE YOU TO  
MY COMMUNITY."



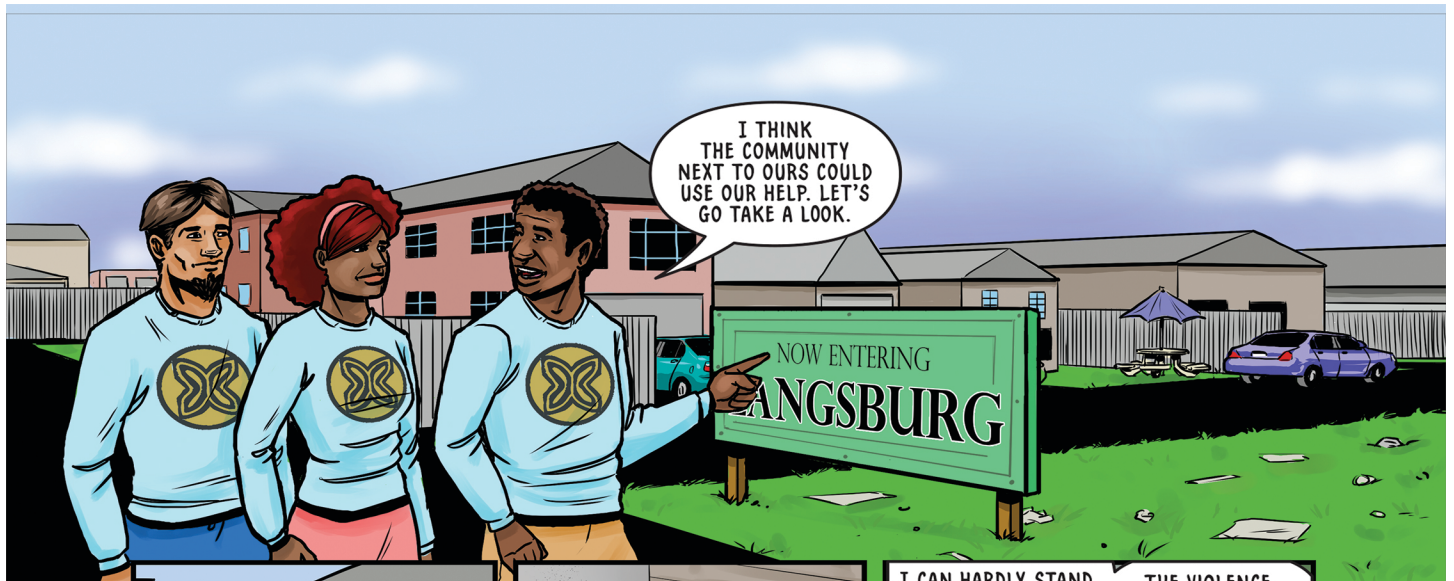












I THINK THE COMMUNITY NEXT TO OURS COULD USE OUR HELP. LET'S GO TAKE A LOOK.



EXCUSE ME MA'AM, IS EVERYTHING ALRIGHT?

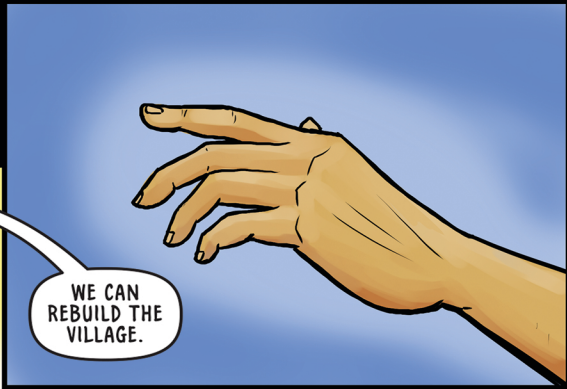


I CAN HARDLY STAND IT HERE. PEOPLE DON'T HAVE RESPECT FOR EACH OTHER ANYMORE.

THE VIOLENCE, THE KIDS... I JUST... I DON'T KNOW HOW TO FIX IT.



IT'S GOING TO BE OK.



WE CAN REBUILD THE VILLAGE.



TOGETHER.





## ***WE THEN WORK WITH***

community members to create, implement, and evaluate the solutions to the problems they have identified in their community. In the case of this comic book, the “solutions” of a community garden and establishing a block club represent the community coming together and creating resources that contributes to them thriving. Other solutions could be a school or education program that responds to the unique culture and needs of that neighborhood’s youth or a grassroots mental health and wellbeing system run for and by the residents.

***THANK YOU*** for reading this comic book about our Community Engagement Initiative (CEI), the first step in our model of Culturally Responsive Community Transformation. From youth to elders, gang members to police, a typical CEI may include talking to over 800 people in a neighborhood through interviews and focus groups that get at the heart of the issues that matter most to the community. Each neighborhood has core assets and talents. For example, community includes formal and informal teachers, counselors, health providers, and spiritual guides; socially conscious businesspeople, social entrepreneurs, spiritual leaders, and community organizers. There is untapped talent in engineering, agriculture, culinary arts, construction, business development, and conflict meditation. The CEI unearths this talent and supports the development of “home grown” solutions and systems.

***BECOME*** is a 501c3 nonprofit organization and professional practice dedicated to fostering equity, justice, and actualization with marginalized communities. Our work is based on the process and science Culturally Responsive Evaluation.

For more information about Become or our Community Engagement Initiative please visit our web site at **[www.becomecenter.org](http://www.becomecenter.org)**, email us at **[info@becomecenter.org](mailto:info@becomecenter.org)** or call us at **312-620-0474**.

**Writers:** Michelle Lodge of Mo Moments Creations, Revolution MacInnes, and Dominica McBride

**Artist:** Michelle Lodge

**Letterer:** Eduardo Camacho

**Producer:** Revolution MacInnes

**Cover design:** Michelle Lodge (illustrations) and Lidia Varesco Design (design & layout)

© Copyright 2017 Become Inc.